

INCLINATOR

COMPANY OF AMERICA



HARRISBURG, PA

ORDER REFERENCE

PROJECT: TYPICAL #750
ELEVETTE CABLE DRUM
MACHINE ROOM ADJACENT TO RAIL

GENERAL CONTRACTOR: -

ARCHITECT: -

EQUIPMENT INSTALLED BY: -

SPECIFICATIONS

MODEL: CABLE "DRUM"- 200

LANDINGS: 3

CODE(S): 4,5

CAPACITY: #750

SPEED: AT 30 F.P.M.±4

SUSPENSION MEANS: 2 WIRE ROPES 11,700 LBS. TRACTION
STL. STEEL 3/8" x 8 x 19 IWRC

CAR CONSTRUCTION: 3/4" HARDWOOD VENEER

NOTE: ALL MANUFACTURER SUPPLIED CAR AND EQUIPMENT OPTIONS ARE
NOTED ON THE CONFIRMING ORDER SHEET.

DISCLAIMER: ONCE DRAWINGS HAVE BEEN APPROVED,
SIGNED AND WITHIN 5 DAYS OF PRODUCTION, THE
CUSTOMER WILL BEAR ALL RESPONSIBILITY AND
LIABILITY OF FINISHED UNIT.

PLEASE REFER ANY QUESTION TO YOUR
SALES REPRESENTATIVE

☐ APPROVED

☐ UNAPPROVED

SIGNATURE

DATE

DWG VIEW

COVER SHEET

PART NUMBER

80205323

REV.DATE



DRAWING TITLE

CABLE DRUM ADJACENT TO RAIL

DRAWING NO.

TYPICAL

PAGE:
1/4

DRAWN BY:
J.PETTYJOHN

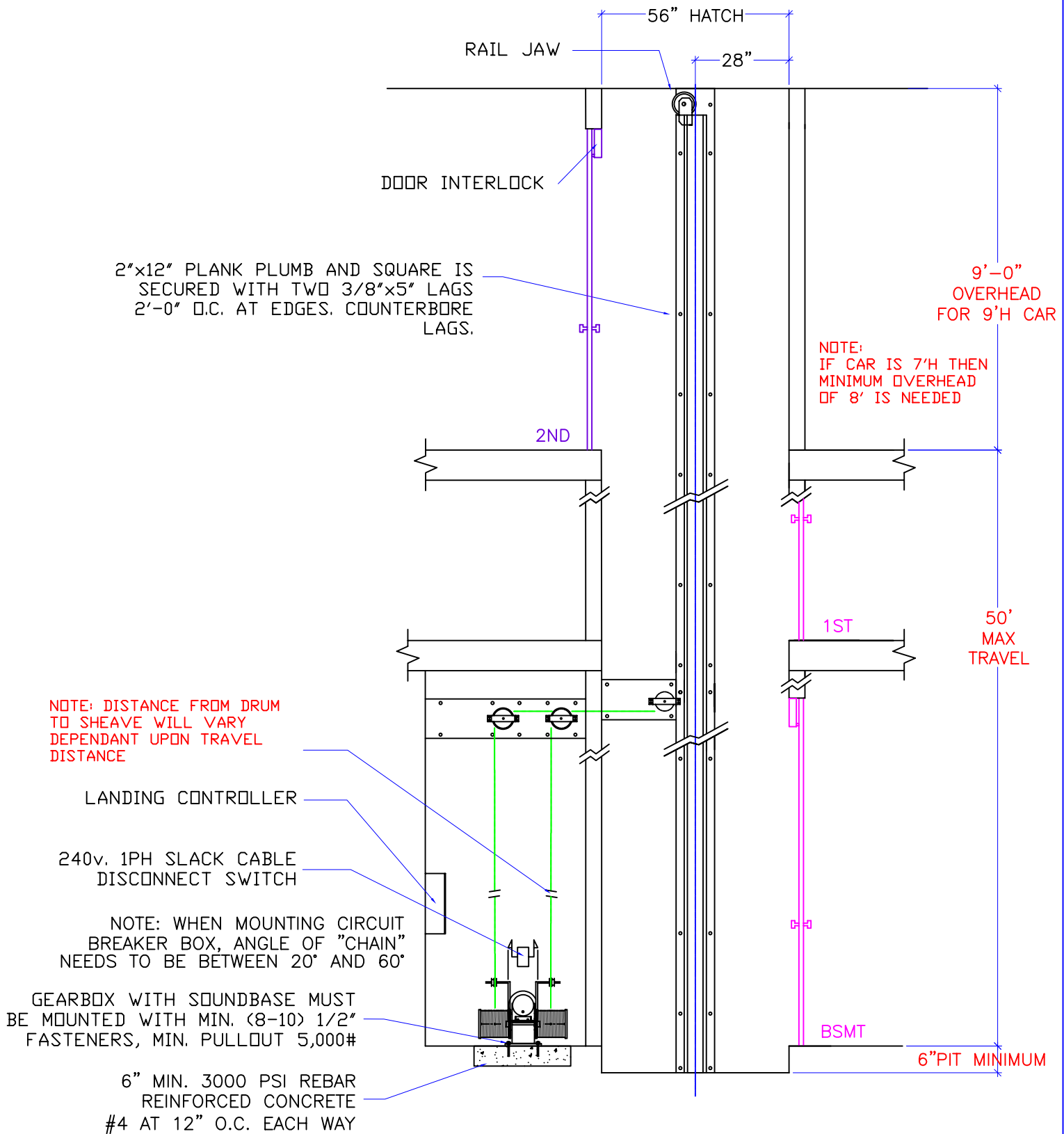
DWG. DATE
04/02/2008

JOB OR APP.#
#750

DEALER P.O.#
-

DWG. SCALE
1:24

REV.LEVEL(1-3)
-



DWG VIEW

SECTION A-A

PART NUMBER

80205323

REV.DATE

—

—

—

INCLINATOR
COMPANY OF AMERICA
HARRISBURG, PA

DRAWING TITLE

CABLE DRUM ADJACENT TO RAIL

DRAWING NO.

TYPICAL

PAGE:
3/4

DRAWN BY:
J.PETTYJOHN

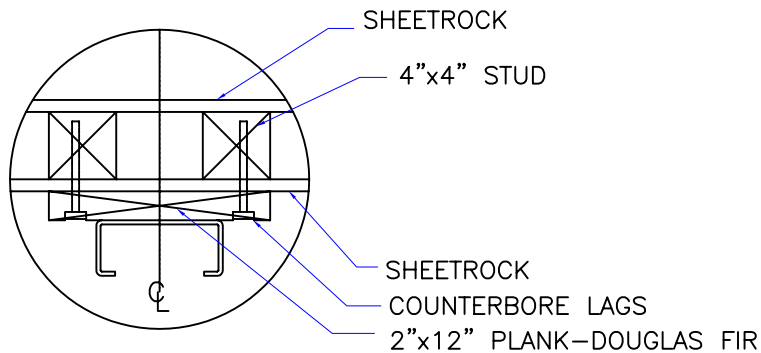
DWG. DATE
04/02/2008

JOB OR APP.#
#750

DEALER P.O.#
—

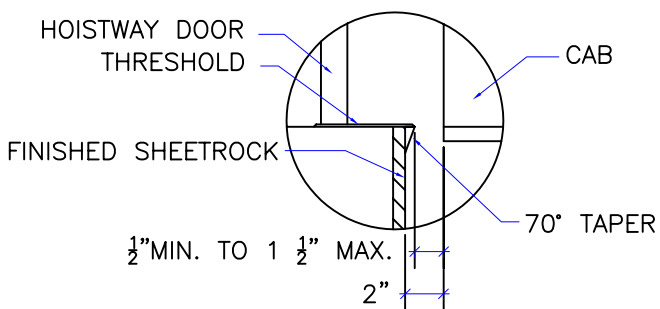
DWG. SCALE
1:24

REV.LEVEL(1-3)
—



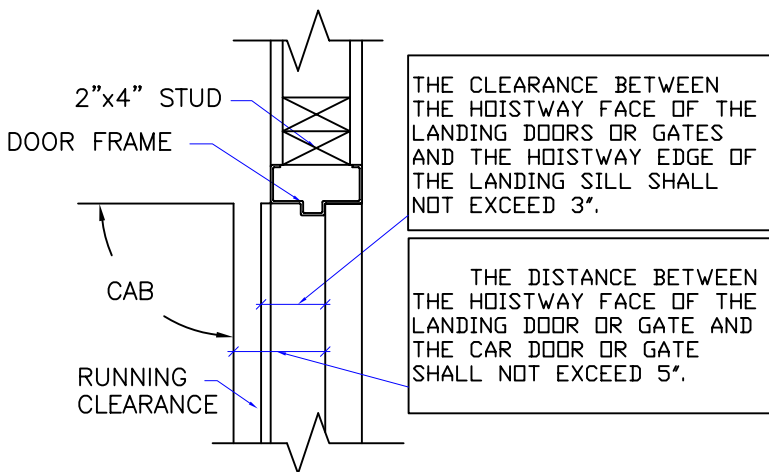
NOTE:
WHEN STUD AND SHEETROCK CONSTRUCTION
IS USED ON THE GUIDE RAIL SUPPORT WALL
4"x4" STUDDING IS NEEDED BEHIND THE

RAIL DETAIL

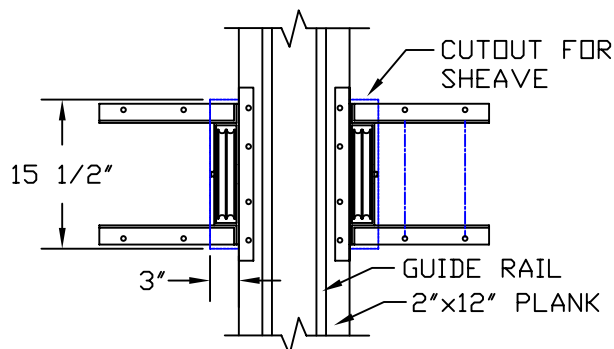
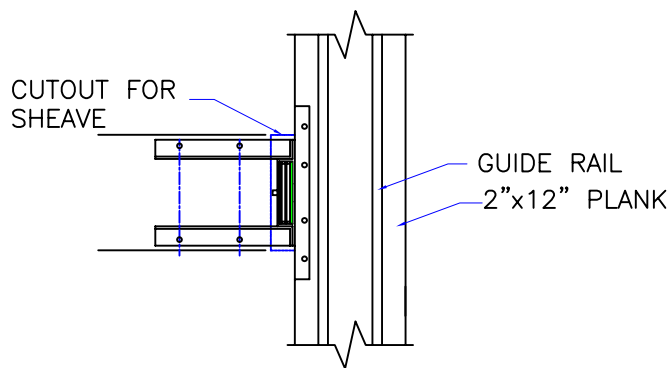


DOOR SILLS TO BE INSTALLED BY G.C.
AFTER LIFT SUPPLIER HAS INSTALLED
A RUNNING PLATFORM. SILL TO BE
BROUGHT OUT TO NOT LESS THAN 1/2"
AND NOT MORE THAN 1 1/2" TO THE
RUNNING PLATFORM.

SILL DETAIL

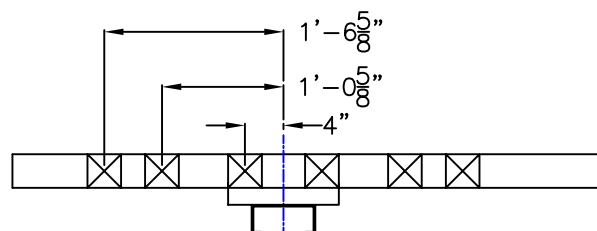


DOOR FRAME DETAIL



CUTOUT DETAIL (SINGLE/ DOUBLE DRUM) (IF APPLIES)

MIRROR OPPOSITE SIDE



STUD LOCATIONS FOR THRU THE WALL SHEAVES (IF APPLIES)

1. REACTIONS ON ALL SHEAVES AND MOUNTINGS
STATIC = 1,350 LBS.
IMPACT = 2,700 LBS.
2. FASTENING OF HOISTING MACHINE TO CONCRETE
1/2 X 3 HILTI BOLTS (OR EQUAL)
3. RAIL FASTENING TO 2"x12" PLANK
#14 x 1 3/4" TYPE A S.M.S. RAIL IS PRE-
DRILLED AT FACTORY.
4. BOLT FASTENING OF CAR TO TROLLEY
1/2" - 13 x 4" SOCKET HD CAP SCREWS

TECHNICAL DATA

DWG VIEW

DETAILS, DATA, CODES

PART NUMBER

80205323

REV.DATE

-

-

-

DRAWING TITLE

CABLE DRUM ADJACENT TO RAIL

DRAWING NO.

TYPICAL

PAGE:
4/4

DRAWN BY:
J.PETTYJOHN

DWG. DATE
04/02/2008

JOB OR APP.#
#750

DEALER P.O.#
-

DWG. SCALE
1:24

REV.LEVEL(1-3)
-